

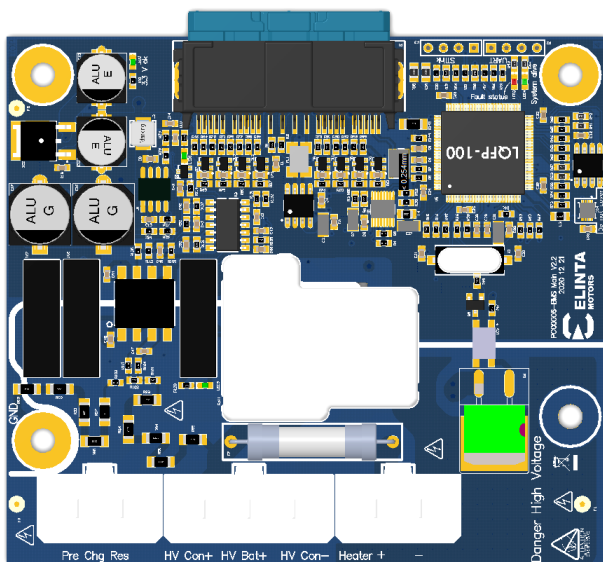
Robust automotive battery management system with integrated ECE R-100 certified leakage and HVIL measurement.

Controlled by STM microcontroller and LTC6811 multicell battery monitors.

Electric Vehicles
Heavy Machinery
Marine Applications

- ECE R-100
- ECE R-10

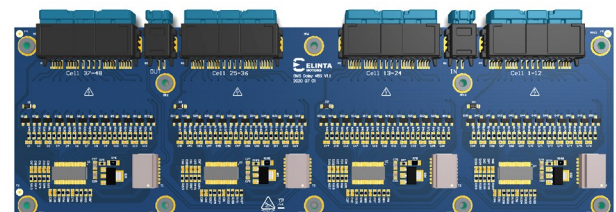
Key Features



- Up to 216 cells in series (850 V)
- 12 Cells per module
- Dual range 50 A / 500 A current sensor
- CAN-USB user interface configuration
- Cell voltage measurement 1.0 V to 5.0 V
- Balancing current 70 mA
- Leakage protection
- HVIL safety protection

Cell Balancer

- Cell module standby current: <math>< 5 \mu\text{A}</math>
- <math>< 0.025\%</math> Voltage measurement error
- Dual temperature sensors – 50 C to +150 C
- iso-SPI Daisy Chain communication.



Master Unit

- Typical working voltage: 12 V to 18 V
- Minimum voltage: 6 V
- Normal operation current: <math>< 600 \text{ mA}</math>
- Standby current: <math>< 20 \text{ mA}</math>

Protection Features

- Over/Under-voltage
- Over/Under temperature
- Overcurrent / Short circuit
- Battery box insulation fault
- HVIL detection
- Humidity detection

Other Features

- Dual power contactor control
- Pre-charge control
- Thermal management
- CAN-bus charger control
- Smart diagnostics and logging.