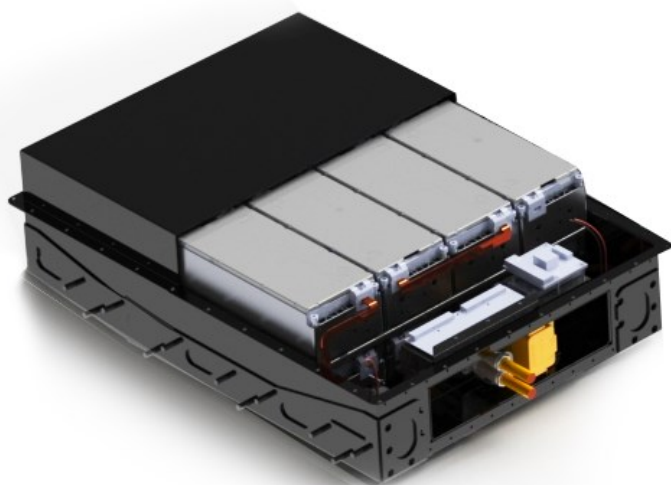


ECE R-100.02 and ECE R-10.05 Certified automotive NMC battery system for commercial vehicle applications.

Integrated BMS and climate control ensures 2000+ charge cycles.
350 A contactors, MSD, HVIL safety and other necessary features for EV or PHEV applications.

- Electric/Hybrid vehicles
- Industrial UPS
- Heavy Machinery
- 360 V
- 350 A
- 102 Ah

Key Features



- 216kg
- Integrated BMS
- CAN-bus control, diagnostics
- 16x Modules - 6 cells each (96 cells 360V)
- 38.4 kWh Total Capacity (36.20 kWh usable)
- Dual range 500 A current sensor
- 25 G impact tested structure
- IP6k9k Protection
- Integrated Heater
- Insulation resistance indication
- HVIL detection

Power

- 60 kW constant discharge
- 90 kW peak discharge
- 350 A MSD fuse
- 1.8 A pre-charge circuit (10s max)

Drawings

